

# COUNTY OF SUFFOLK



**Steven Bellone**  
SUFFOLK COUNTY EXECUTIVE

**Department of Economic Development and Planning**

**Natalie Wright**  
Commissioner

**Division of Planning  
and Environment**

**Issue Date: April 28, 2022**  
**Expiration Date: June 27, 2022**

## **SUFFOLK COUNTY SHELLFISH AQUACULTURE LEASE PROGRAM IN PECONIC BAY AND GARDINERS BAY**

### **PUBLIC NOTICE**

#### **Request for Written Comments on Proposed Shellfish Aquaculture Lease Renewals**

Notice is hereby given that the Suffolk County Department of Economic Development and Planning has received seven Lease Renewal Applications from existing leaseholders that wish to renew their lease for an additional ten (10) year term. Each of these Leaseholders initially obtained their lease during Phase I (2010-2020) of the County's Shellfish Aquaculture Lease Program under either Cycle #1 or Cycle #3; and have been conducting shellfish aquaculture activities on their lease site for the past ten (10) years. Pursuant to Chapter §475-16 Article II of the Suffolk County Code, a lease may be issued for a term of ten (10) years, with an option to renew for an additional ten (10) years. All lease site proposed for renewal are located within the adopted Revised Shellfish Cultivation Zone.

Pertinent data and information from each of the Lease Renewal Applications, including the Lease Sites Map ID #, the name of the leaseholder, respective Application Reference # and the location (center point coordinates) for each lease site are contained in Attachment A to this Public Notice. This Public Notice and a map showing the locations of all the lease sites proposed for renewal are available on the website listed below:

<https://www.suffolkcountyny.gov/Departments/Economic-Development-and-Planning/Planning-and-Environment/Environmental-Planning-and-Aquaculture/Shellfish-Aquaculture-Lease-Program>

#### **PUBLIC COMMENT:**

Comments regarding the subject applications for lease renewals must be prepared in writing and mailed to the contact person listed. All comments must be post marked Monday, June 27, 2022. Such comments should be targeted to the lease site and/or leaseholder by referencing the applicable SCALP # or Lease Site Map ID #, as shown in this Public Notice. Comments and/or objections should include supporting documentation and data to the maximum extent possible. Those parties raising an objection to a lease renewal based on reasons of natural productivity and commercial fishery, should send a notarized letter, stating the particular reason(s) for the objection.

Documentation supporting the claim should also be provided, including a copy of the parties' commercial harvest license, landings reports and sales receipt, as applicable.

**Contact:**

Suffolk County Department of Economic Development & Planning  
Division of Planning & Environment  
H. Lee Dennison Bldg. – 11<sup>th</sup> Floor  
100 Veterans Memorial Highway  
P.O. Box 6100  
Hauppauge, NY 11788-0099

**ATTN: Susan Filipowich, Senior Environmental Analyst**

Should any questions arise on the content of this Public Notice, please contact Ms. Susan Filipowich of my staff at 631-853-4775.

Sarah Lansdale, A.I.C.P.  
Director  
Division of Planning and Environment

## Attachment A: Lease Sites Proposed for Lease Renewal

Applicant	Reference #	Lease Site Map ID#	Lease Center Point		Bay Location	Town	Operation Type
			Latitude	Longitude			
Eastern Bays Co. Inc.	13.01.02.W.	1	40.918671	-72.594990	Flanders	Riverhead	Off-Bottom
Howard Pickerell	10.01.06.W.	632	40.977412	-72.391585	Little Peconic	Southampton	Off-Bottom
Harbor Lights Oyster Co. LLC	10.01.20.W.	544	41.056197	-72.408919	Southold	Southold	Off-Bottom
Roger Cornell	10.01.03.W.	530	41.019086	-72.410872	Little Peconic	Southold	Off-Bottom
Thomas Cornell	10.01.04.W.	500	41.017259	-72.421065	Little Peconic	Southold	On/Off-Bottom
Montauk Shellfish Company Inc.	11.03.02.W.	851	41.008412	-72.086406	Napeague	East Hampton	On/Off Bottom
Meetinghouse Creek Fisheries Inc.	11.03.05.W.	17	40.931760	-72.544720	Great Peconic	Riverhead	Off Bottom

This Public Notice and maps showing the locations of all the lease sites proposed for renewal are available on the website:

<https://www.suffolkcountyny.gov/Departments/Economic-Development-and-Planning/Planning-and-Environment/Environmental-Planning-and-Aquaculture/Shellfish-Aquaculture-Lease-Program>

# **COUNTY OF SUFFOLK**



**Steven Bellone**  
SUFFOLK COUNTY EXECUTIVE  
Department of Economic Development and Planning

**Natalie Wright**  
Commissioner

**Division of Planning  
and Environment**

**Issue Date: April 28, 2022**  
**Expiration Date: June 27, 2022**

## **SUFFOLK COUNTY SHELLFISH AQUACULTURE LEASE PROGRAM IN PECONIC BAY AND GARDINERS BAY**

### **MAPS SHOWING LOCATIONS OF LEASE SITES PROPOSED FOR LEASE RENEWAL**

Each lease renewal application is summarized on one page that also includes a map insert. The locations of each proposed lease site are shown on this map. The specific lease sites are identified by Lease Site Map ID #, e.g., 801.

Suffolk County Shellfish Aquaculture Lease  
Program in Peconic Bay and Gardiners Bay

Lease Renewal Application

**Reference #:** SCALP 13.01.02.W

**Name of Leaseholder:**

Eastern Bays Company, Inc.  
1300 Broadwaters Road  
Cutchogue, New York 11935

**Proposed for Renewal:**

**Lease Site #:** 1

**Lease Acreage:** 10 Acres

**Lease Location:** Flanders Bay, Riverhead

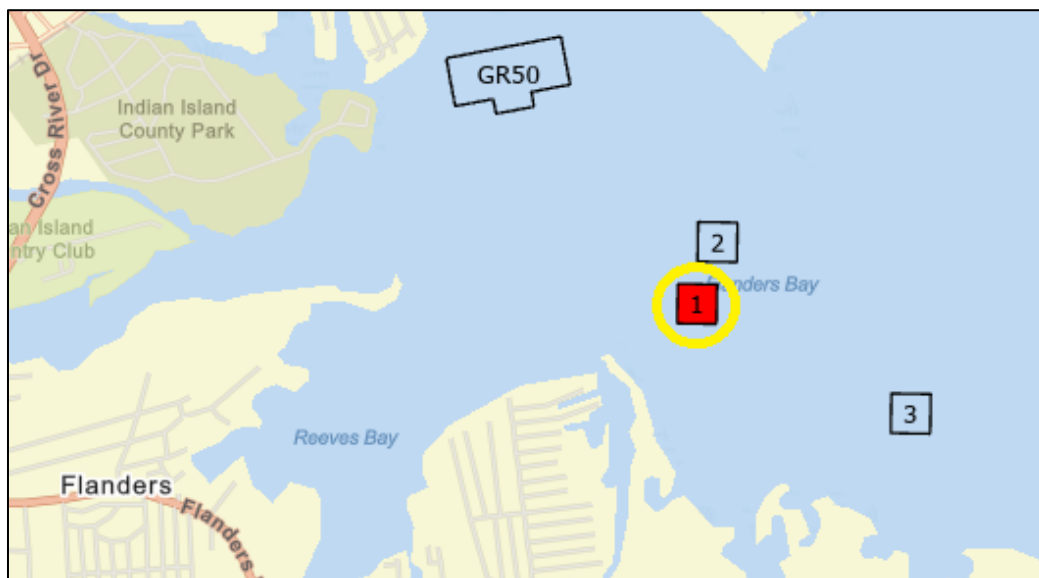
**Lease Type:** Commercial

**Operation Type:** Off-Bottom Culture

**Cultivation Method:** Submerged

**Lease Site Coordinates:**

Location	Latitude	Longitude
NW Corner	40.919582	-72.596164
NE Corner	41.919553	-72.593776
SW Corner	40.917771	-72.596202
SE Corner	40.917742	-72.593814



To view this lease site from a regional perspective go to the SCALP Lease Status Mapper at:  
<https://www.suffolkcountyny.gov/Departments/Economic-Development-and-Planning/Planning-and-Environment/Environmental-Planning-and-Aquaculture/Shellfish-Aquaculture-Lease-Program/Progam-Maps>

Suffolk County Shellfish Aquaculture Lease  
Program in Peconic Bay and Gardiners Bay

Lease Renewal Application

Reference #: SCALP 10.01.06.W

**Name of Leaseholder:**

Howard Pickerell  
36 West Trail Road  
Water Mill, New York 11973

**Proposed for Renewal:**

**Lease Site #:** 632

**Lease Acreage:** 10 Acres

**Lease Location:** Little Peconic Bay, Southampton

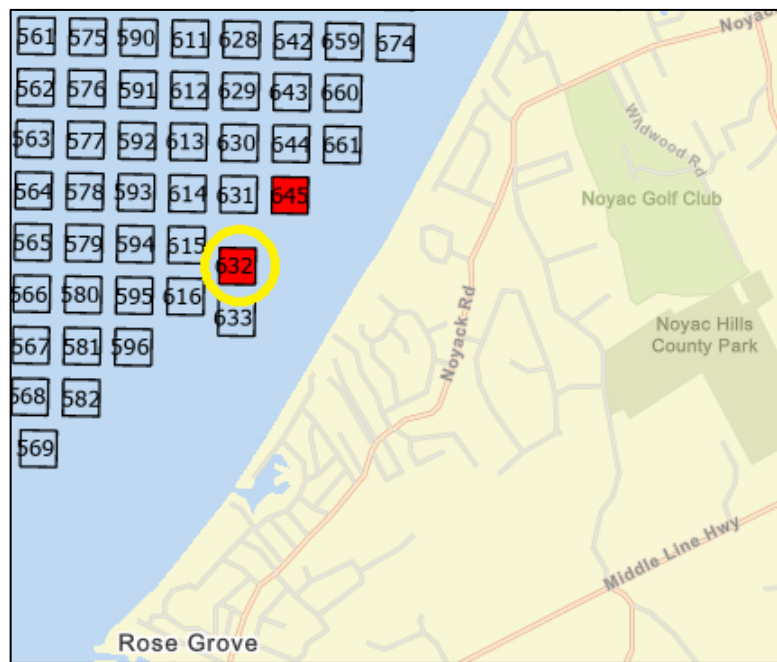
**Lease Type:** Commercial

**Operation Type:** Off-Bottom Culture

**Cultivation Method:** Submerged

**Lease Site Coordinates:**

Location	Latitude	Longitude
NW Corner	40.978362	-72.392757
NE Corner	40.978293	-72.390367
SW Corner	40.976515	-72.392801
SE Corner	40.976481	-72.390411



To view this lease site from a regional perspective go to the SCALP Lease Status Mapper at:  
<https://www.suffolkcountyny.gov/Departments/Economic-Development-and-Planning/Planning-and-Environment/Environmental-Planning-and-Aquaculture/Shellfish-Aquaculture-Lease-Program/Progam-Maps>

Suffolk County Shellfish Aquaculture Lease  
Program in Peconic Bay and Gardiners Bay

Lease Renewal Application

Reference #: SCALP 10.01.20.W

**Name of Leaseholder:**

Harbor Lights Oyster Company LLC  
104 South Ferry Road  
Shelter Island, New York 11964

**Proposed for Lease Renewal:**

**Lease Site #:** 544

**Lease Acreage:** 10 Acres

**Lease Location:** Southold Bay, Southold

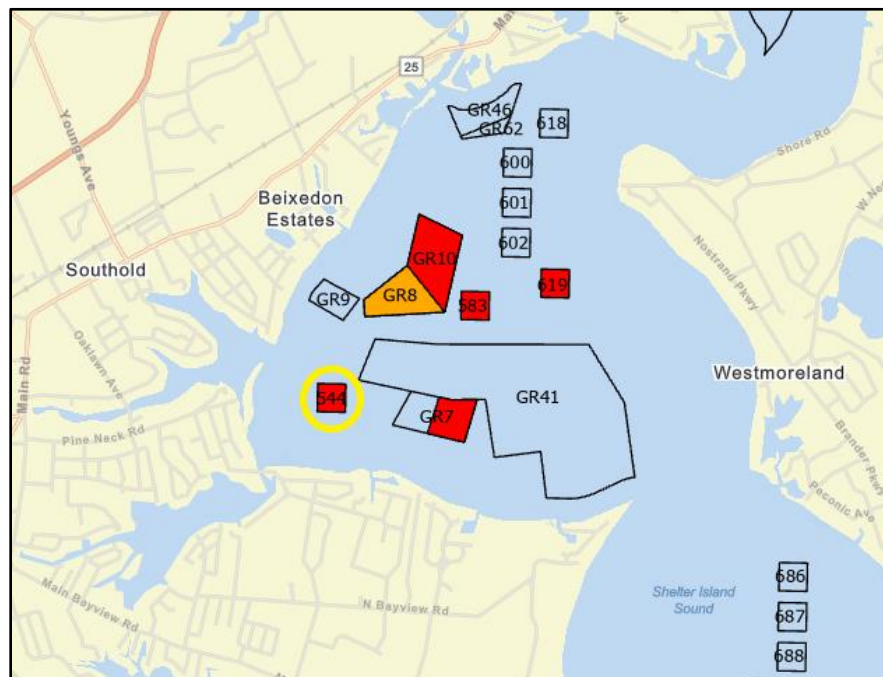
**Lease Type:** Commercial

**Operation Type:** Off-Bottom Culture

**Cultivation Method:** Submerged

**Lease Site Coordinates:**

Location	Latitude	Longitude
NW Corner	41.057111	-72.410092
NE Corner	41.057078	-72.407700
SW Corner	41.055300	-72.410136
SE Corner	41.055267	-72.407743



To view this lease site from a regional perspective go to the SCALP Lease Status Mapper at:  
<https://www.suffolkcountyny.gov/Departments/Economic-Development-and-Planning/Planning-and-Environment/Environmental-Planning-and-Aquaculture/Shellfish-Aquaculture-Lease-Program/Progam-Maps>

Suffolk County Shellfish Aquaculture Lease  
Program in Peconic Bay and Gardiners Bay

Lease Renewal Application

Reference #: SCALP 10.01.03.W

**Name of Leaseholder**

Roger Cornell  
650 Lakeside Drive North  
Southold, New York 11971

**Proposed for Lease Renewal:**

**Lease Site #:** 530

**Lease Acreage:** 10 Acres

**Lease Location:** Hog's Neck Bay, Southold

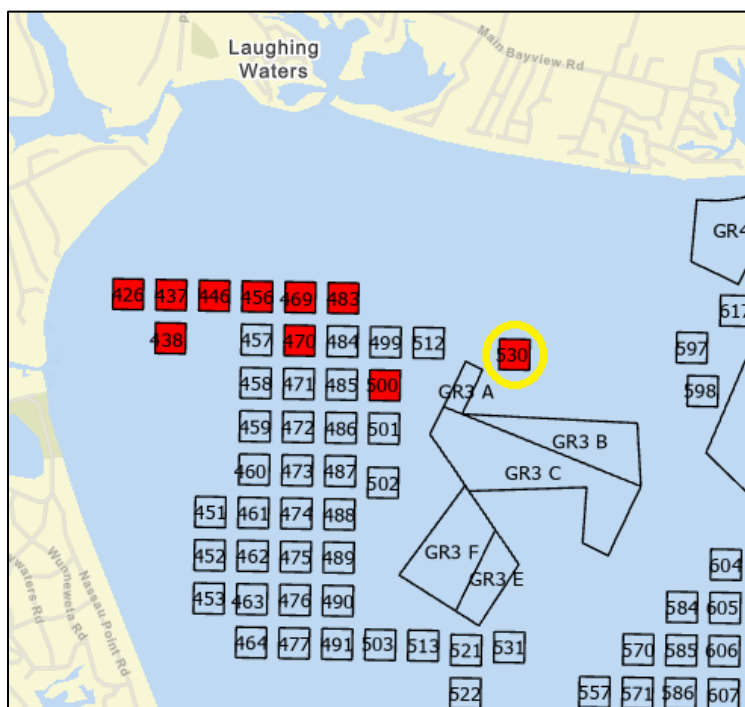
**Lease Type:** Commercial

**Operation Type:** Off-Bottom Culture

**Cultivation Method:** Submerged

**Lease Site Coordinates:**

Location	Latitude	Longitude
NW Corner	41.020000	-72.412046
NE Corner	41.019967	-72.409654
SW Corner	41.018189	-72.412089
SE Corner	41.018156	-72.409698



To view this lease site from a regional perspective go to the SCALP Lease Status Mapper at:  
<https://www.suffolkcountyny.gov/Departments/Economic-Development-and-Planning/Planning-and-Environment/Environmental-Planning-and-Aquaculture/Shellfish-Aquaculture-Lease-Program/Progam-Maps>



Suffolk County Shellfish Aquaculture Lease  
Program in Peconic Bay and Gardiners Bay

Lease Renewal Application

**Reference #:** SCALP 10.01.04.W

**Name of Leaseholder:**

Thomas Cornell  
170 Jockey Creek Drive  
Southold, New York 11971

**Proposed for Lease Renewal:**

**Lease Site #:** 500

**Lease Acreage:** 10 Acres

**Lease Location:** Hog's Neck Bay, Southold

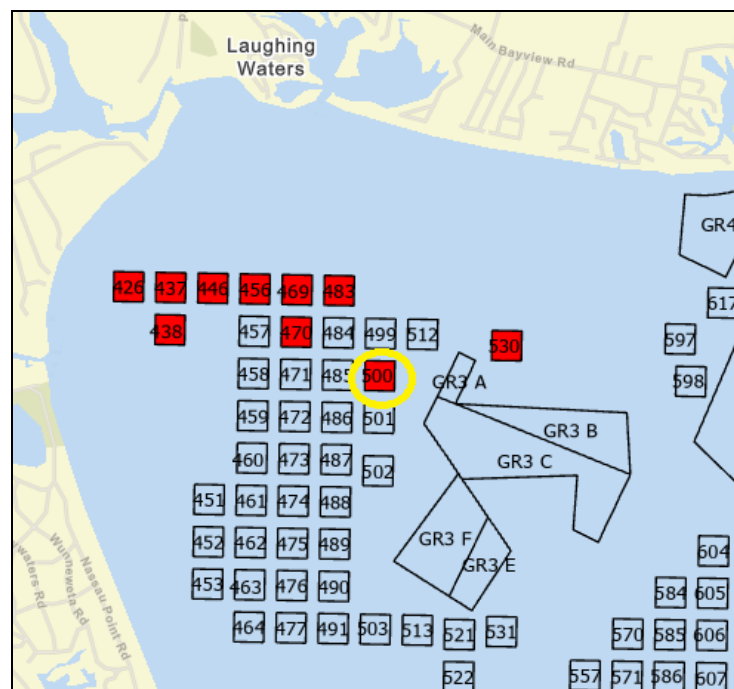
**Lease Type:** Commercial

**Operation Type:** On/Off-Bottom Culture

**Cultivation Method:** Submerged

**Lease Site Coordinates:**

Location	Latitude	Longitude
NW Corner	41.018172	-72.422238
NE Corner	41.018139	-72.419847
SW Corner	41.016361	-72.422281
SE Corner	41.016326	-72.419890



To view this lease site from a regional perspective go to the SCALP Lease Status Mapper at:  
<https://www.suffolkcountyny.gov/Departments/Economic-Development-and-Planning/Planning-and-Environment/Environmental-Planning-and-Aquaculture/Shellfish-Aquaculture-Lease-Program/Progam-Maps>

Suffolk County Shellfish Aquaculture Lease  
Program in Peconic Bay and Gardiners Bay

Lease Renewal Application

**Reference #:** SCALP 11.03.05.W

**Name of Leaseholder:**

Montauk Shellfish Company Inc.  
PO Box 1015  
Montauk, New York 11954

**Proposed for Lease Renewal:**

**Lease Site #:** 851

**Lease Acreage:** 10 Acres

**Lease Location:** Napeague Bay, East Hampton

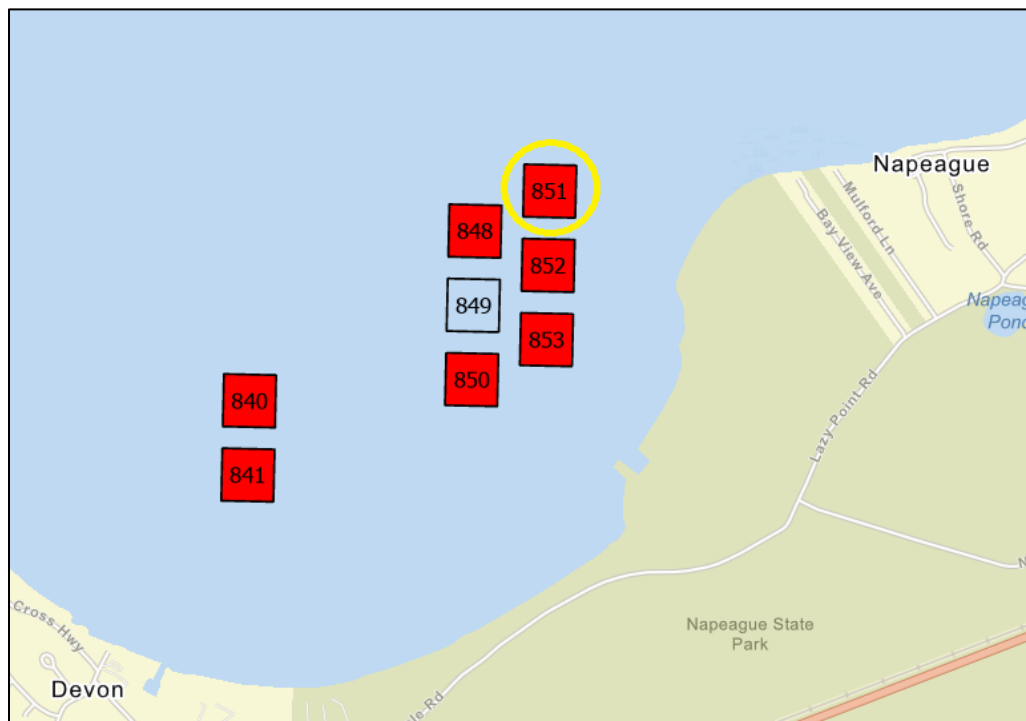
**Lease Type:** Commercial

**Operation Type:** On/Off-Bottom Culture

**Cultivation Method:** Submerged/Floating

**Lease Site Coordinates:**

Location	Latitude	Longitude
NW Corner	41.009337	-72.087575
NE Corner	41.009298	-72.085184
SW Corner	41.007526	-72.087627
SE Corner	41.007487	-72.085236



To view this lease site from a regional perspective go to the SCALP Lease Status Mapper at:  
<https://www.suffolkcountyny.gov/Departments/Economic-Development-and-Planning/Planning-and-Environment/Environmental-Planning-and-Aquaculture/Shellfish-Aquaculture-Lease-Program/Program-Maps>

Suffolk County Shellfish Aquaculture Lease  
Program in Peconic Bay and Gardiners Bay

Lease Renewal Application

**Reference #:** SCALP 11.03.05.W

**Name of Leaseholder:**

Meetinghouse Creek Fisheries Inc.  
105 Beach Road  
Riverhead, New York 11901

**Proposed for Lease Renewal:**

**Lease Site #:** 17

**Lease Acreage:** 10 Acres

**Lease Location:** Great Peconic Bay, Riverhead

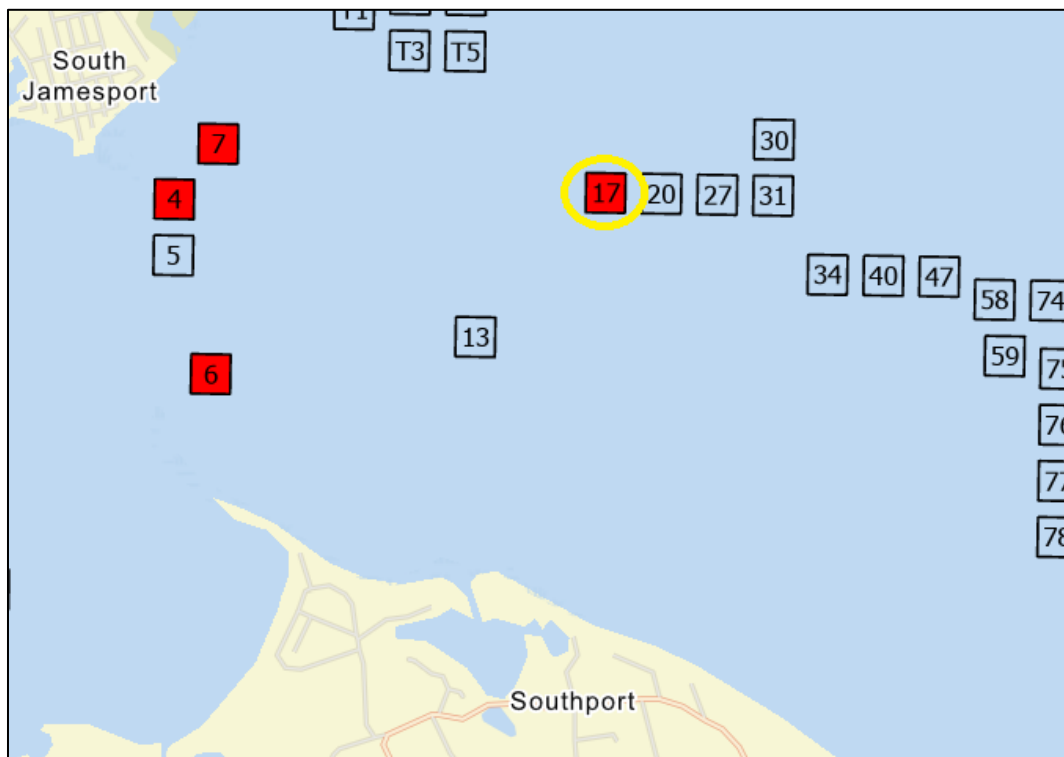
**Lease Type:** Commercial

**Operation Type:** Off-Bottom Culture

**Cultivation Method:** Submerged

**Lease Site Coordinates:**

Location	Latitude	Longitude
NW Corner	40.932680	-72.545894
NE Corner	40.932650	-72.543506
SW Corner	40.930869	-72.545934
SE Corner	40.930839	-72.543545



To view this lease site from a regional perspective go to the SCALP Lease Status Mapper at:  
<https://www.suffolkcountyny.gov/Departments/Economic-Development-and-Planning/Planning-and-Environment/Environmental-Planning-and-Aquaculture/Shellfish-Aquaculture-Lease-Program/Progam-Maps>